

# Spectrum Pro™

*PCI-PTS 4.x with SRED Certified Outdoor Hybrid Insert Reader*

## Encryption Security and Tamper Resistance

The Spectrum Pro is a PCI-PTS 4.x with SRED hybrid MagStripe and Smart card insert reader designed for outdoor unattended POS operations. Meeting the latest requirements of the payment industry, the Spectrum Pro is EMV Level 1 and Level 2 approved and features DUKPT key management with TDES or AES encryption algorithms to ensure MagStripe and Smart card data is protected. The Spectrum Pro also uses the mutual RSA authentication which the host and PIN pad during the first time initialization to enhance the secure communication. Its tamper-resistant structure extends the reader's physical security to protect consumers' financial data from being compromised.

## Easy Integration for Contactless and Chip & PIN Solutions

The Spectrum Pro has the ability to be integrated with ID TECH's PIN pads for a Chip & PIN solution, and with the contactless antenna from the ViVOpay Kiosk III for outdoor and unattended applications such as parking, vending machines, kiosks, ATMs and other POS systems.

## Class Leading Durability and Reliability

The Spectrum Pro is IP 65 rated to withstand the rigors of the outdoor environment against dust, liquid and other harmful substances. An optional heater is available to prevent ice from forming in cold environments. The sleep mode and stop mode on the Spectrum Pro allow for power conservation and a fast wake up ability once a card is inserted. An LED on the front of the reader informs users of successful card reading while three LEDs on the back are used for diagnostic purposes.

## Features and Benefits:

- MagStripe and Smart Card Insert Reader for integration into an EMV Chip & PIN Solution
- EMV Level 1 and Level 2 Certified
- PCI-PTS 4.x Certified with SRED function supported
- Supports TDES and AES encryption algorithms with DUKPT key management
- RoHS 2 and REACH compliant
- Reads up to 3 tracks of card data
- Remote Key Injection available
- Two SAM module
- Optional contactless antenna
- Optional latch, front switch and heater
- Compatible mounting scheme with the standard ID TECH flush mount metal bezel
- Low power sleep mode and stop mode



# Spectrum Pro™

## Specifications

### Electrical

Interfaces:	RS232, USB-HID
Power Requirements (RS232):	12 VDC
Power Requirements (USB):	12 VDC

### Environmental

Operating Temperature:	-13°F to 158°F ( -25°C to 70°C ) non-condensing
Storage Temperature:	-40°F to 185°F ( -40°C to 85°C ) non-condensing
Humidity:	Maximum 95% non-condensing

### Reliability

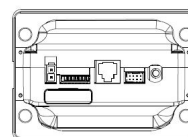
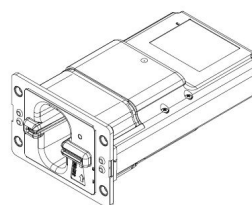
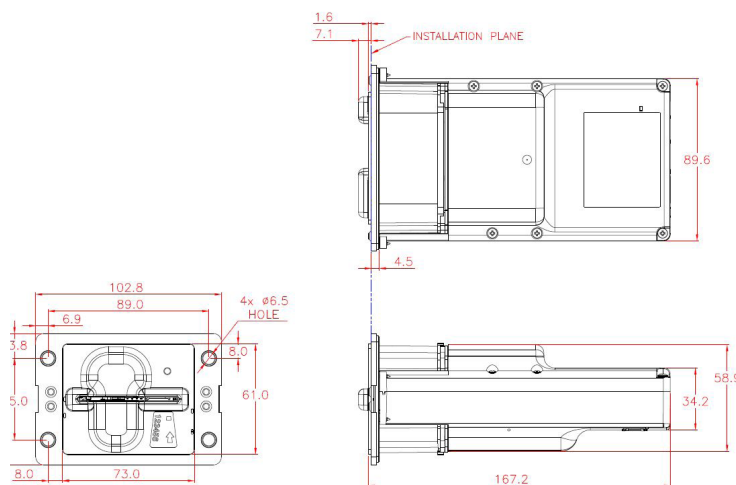
Magnetic Head Life:	1,000,000 cycles minimum*
Chassis and Bezel:	1,000,000 card cycles minimum*
Warranty:	One year, parts and labor

\*All wear reliability numbers are based on operation in a benign environment

### Mechanical

Dimension (L)x(W)x(H):	6.51 inches (165.3 mm) x 4.0 inches (102.8 mm) x 2.4 inches (60.4 mm)
Media Thickness:	0.76 mm (tolerance +/- 0.08 mm)
Media Formats:	ISO 7810 ID-1 card, ISO 7811, ISO 7816, AAMVA Driver License format
Color:	Black
Seal Rating:	IP 65
Shock Protection:	IK10

Footprint:



### United States Sales Office

#### Corporate Headquarters

10721 Walker Street  
Cypress, CA 90630  
Phone: (714) 761-6368  
Toll Free: (800) 984-1010  
Fax: (714) 761-8880  
sales@idtechproducts.com

### International Sales Offices

#### Asia

+866-3-496-6988 (Taiwan)  
asia@idtechproducts.com.tw

#### Canada

+416-519-8529  
martinm@idtechproducts.com

#### South America

+55-11-3079-2255  
internationalsales@idtechproducts.com

#### Europe

+011 44 1925 269550  
emea@idtechproducts.com

**ISO 9001 Certified**  
**ISO 14001 Certified**



Value through Innovation

www.idtechproducts.com

# Legacy Technology Services

**We Rent & Sell All Types Of Barcode Equipment**

Call now to talk to an expert

**866-271-9891**

[www.LegacyGlobal.com](http://www.LegacyGlobal.com)

Some brands we carry



**MOTOROLA**

**Intermec**

**DATALOGIC**™

**Honeywell**

**EQUINOX**  
PAYMENTS



## About us

- Legacy Technology Services is a leading nationwide provider of mobile computing, barcode, printers and point of sale equipment and services.
- For over a decade, thousands of clients across North America have trusted us to provide equipment from leading manufacturers backed by the services to support them.

## Latest Hardware from top manufacturers

- Legacy handles virtually every major manufacturer of mobile computing, barcoding and point of sale equipment.

## Expert Repair and Maintenance services

- Legacy is one of the best repair facilities in North America

## Discontinued product sourcing

- They don't make it anymore? Our inventory also includes manufacturer close-outs and discontinued equipment to support our clients legacy infrastructure.

## Trade-in and Disposal services

- That old equipment laying around your facility may still have some value. Legacy routinely purchases equipment from our clients around the globe.
  - Data destruction
  - Hardware disposal
  - Auditing services

## Dedicated client account team

- Dedicated, highly trained account managers are here to answer all your questions and provide top notch service.

## Equipment rental services

- Sometimes renting is a better solution, Legacy's huge rental inventory provides the equipment you need for temporary needs and projects.



[Legacy, Inc.](http://Legacy, Inc.)

160 West Road,  
Ellington, CT 06029

Toll Free: 866-271-9891

Fax: 888-522-4684